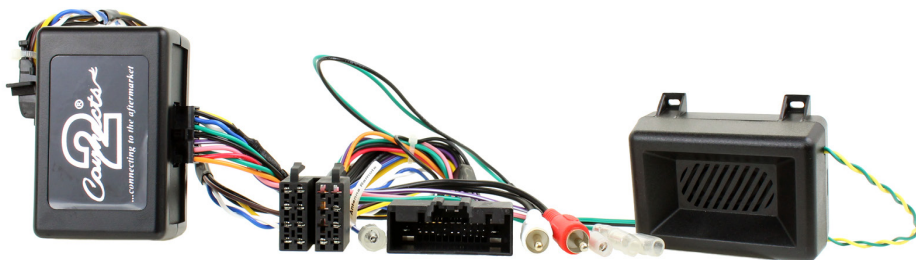




## CTSFO013.2

### Ford Steering Wheel Control Interface



---

#### Vehicle Application

Ford Ranger 2013>

For South American Models

---

#### Key Features

- Retains Steering Wheel Controls (if equipped)
  - Retains Parking Sensor Audio
  - Retains Time/Date Change Via SWC
- Provides Park Brake, Speed Pulse, Reverse Gear & Antenna Remote

***www.connects2.com***

Designed and  
Engineered  
in the UK.



*The information provided in this document is subject to change without notice due to changes and/or improvements to the product/s.*

# ABOUT THIS PRODUCT

---

## CTSFO013.2

CAN-Bus Steering Wheel Control Interface for South American Ford Ranger. Retains parking sensor audio

## WIRING COLOUR CODES

---

Purple	Right Rear Speaker +	Yellow	Permanent 12V
Purple/Black	Right Rear Speaker -	Black	Ground
Green	Left Rear Speaker +	Red	Ignition 12V
Green/Black	Left Rear Speaker -	Pink	Speed Pulse
Grey	Right Front Speaker +	Green	Park Brake
Grey/Black	Right Front Speaker -	Purple/White	Reverse Gear
White	Left Front Speaker +	Blue/White	Antenna Remote
White/Black	Left Front Speaker -		

## PRIOR TO INSTALLATION

---

*Read the manual prior to installation. Technical knowledge is necessary for installation. The place of installation must be free of moisture and away from heat sources. Please ensure that the correct tools are using during the installation to avoid damage to the vehicle or product. **Connects2 can not be held responsible for the installation of this product.***

## TECHNICAL SUPPORT

---

Connects2 Ltd. want to provide a fast and suitable resolution to any problems encountered during installation of this product. To get in touch with our dedicated technical support team, please fill in a ticket at [support.connects2.com](https://support.connects2.com) and provide as much information as possible.

---

## FOLLOW US ON SOCIAL MEDIA

for all the latest updates



/CONNECTS2  
Watch us on  
YouTube



/CONNECTS2  
Like us on  
facebook



CONNECTS2LTD  
Follow us on  
instagram



@CONNECTS2  
Follow us on  
twitter



CONNECTS2LTD  
Follow us on  
linkedin



CONNECTS2BLOG.COM  
Follow our blog on  
wordpress

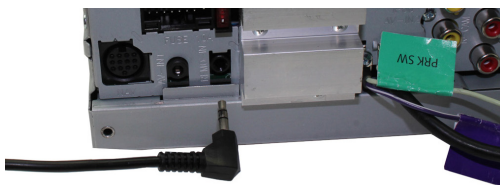
## FITTING GUIDE

---

1. Remove and disconnect the original head unit.
2. Connect the 12 way molex connector of the head unit patch lead (supplied separately) to the interface.
3. Connect the opposite end of head unit patch lead to the head unit steering wheel control input on the back of the aftermarket head unit.

*NB: This may be a 3.5mm jack plug or a wire input depending upon the head unit brand being fitted. Please see the head unit installation manual for further information on where to connect.*

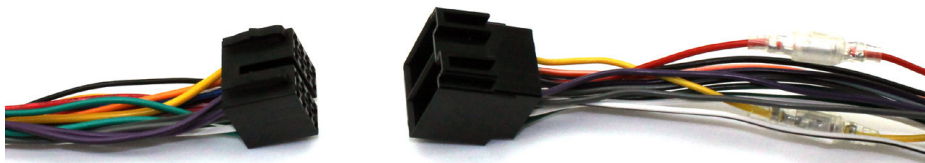
**Important: This step must be completed before connecting power to the interface. Failure to do so may result in no steering wheel control function.**



4. Connect the 14 way molex connector to the interface



5. Connect the male power/speaker ISO harness to the female power/speaker ISO harness from the aftermarket head unit. For aftermarket head units without an ISO connector, please refer to "Wiring Colour Codes" on Pg. 2.



## FITTING GUIDE

---

6. Connect the female vehicle specific connectors on the harness to the male vehicle connector from the vehicle.

7. Connect the chime speaker box to the loom via the 4 pin connector and the red/white RCA connectors to the stereo Aux Input.

8. Remove the car display connector from the vehicle and plug into the interface (please remove the dust cover from the interface before making the connection).

9. Connect the display connector from the loom to the vehicle (the port previously occupied by the car display connector, removed in Step 8.)

Test head unit for correct operation.

## STEERING WHEEL CONTROL FUNCTIONALITY

---

Original Button	Function
Volume +	Volume +
Volume -	Volume -
Track +	Track +
Track -	Track -
Speech	Switch on Display (Short Press)
Speech	Enter Menu Mode (Long Press)
M	Mute

## CHANGING THE TIME/DATE

---

Press 'Speech' to turn on the display, and long press 'Speech' to enable Menu Mode.

Press 'Volume +'/ 'Volume -' to select Clock Setting and press 'Speech' to confirm

To adjust the clock, use 'Volume +'/ 'Volume -' and 'Track +'/ 'Track -' and press 'Speech' to confirm

Follow the steps above to change the Date

Once Time/Date have been set, press 'Speech' to confirm.

The Menu will time out after 15-20 seconds of no button press